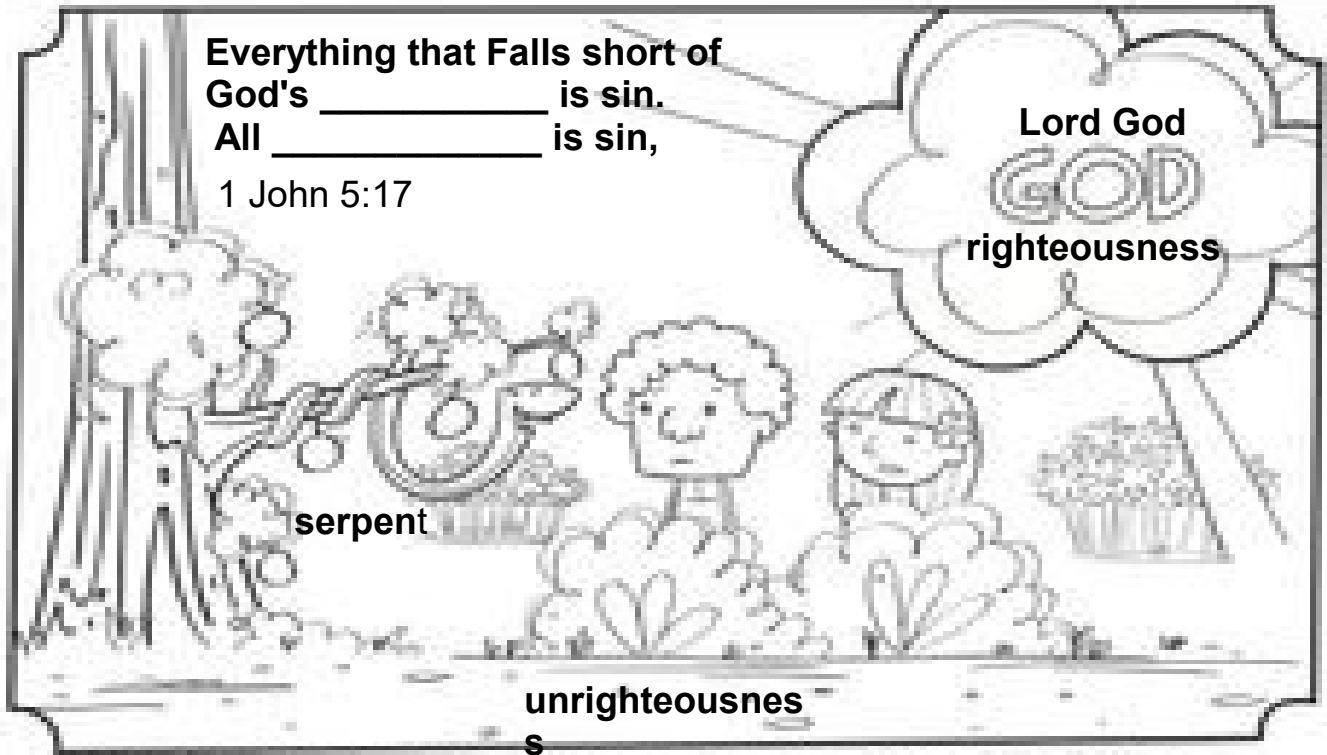


Fill in the blanks with the words in the picture to finish the verses.



Everything that Falls short of  
 God's \_\_\_\_\_ is sin.  
 All \_\_\_\_\_ is sin,  
 1 John 5:17

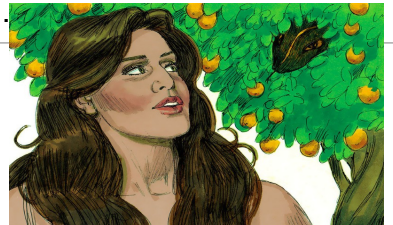
Lord God  
**GOD**  
 righteousness

serpent

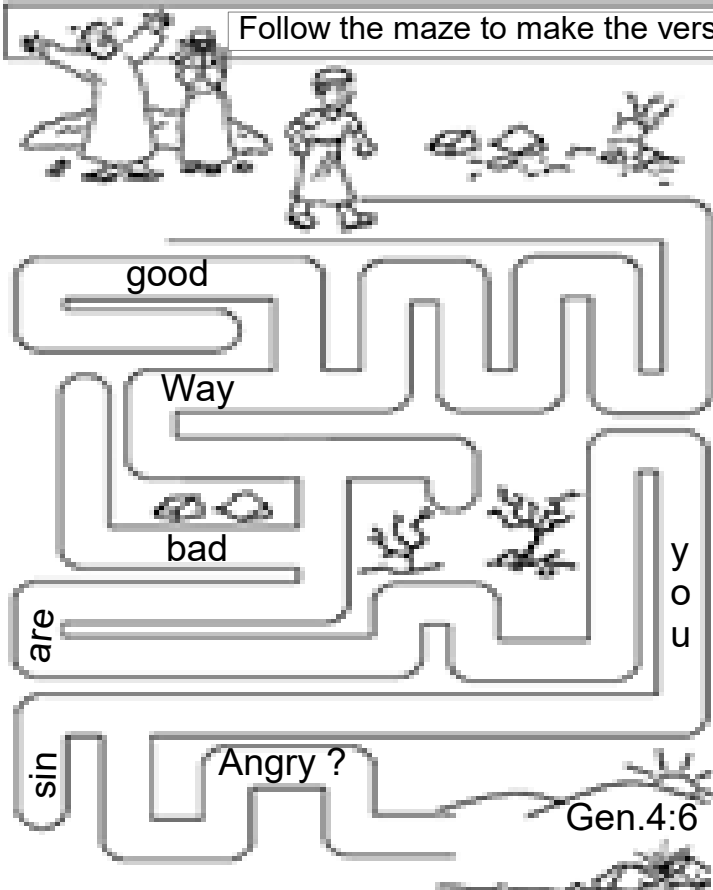
unrighteousnes  
 s

Genesis 3:1 Now the \_\_\_\_\_ was more crafty than any beast of the field which the \_\_\_\_\_ had made.

God sent Cain away.



Follow the maze to make the verse



Genesis 3:4

The serpent said to the woman, "You surely will not die! 5"For God knows that in the day you eat from it your eyes will be opened, and you will be like God, knowing good and evil."



Genesis 4:6-7

"Why are you angry? And why has your countenance fallen? 7"If you do well, will not *your countenance* be lifted up? And if you do not do well, sin is crouching at the door; and its desire is for you, but you must master it."

Gen.4:6

